

# HIGHLAND

## WOOD SPECIFICATIONS

### **DRAWER BOX**

- 1/2" Particle Board Core with Melamine paper (Side, Bottom & Top);

### **FACE FRAME**

- 3/4" x 1-1/2" Solid Birch Wood;

### **DOORS (FULL OVERLAY)**

- Center Panel - MDF Core With Birch Wood Veneer  
Stile and Rail - Solid Birch

### **DRAWER FRONTS (FULL OVERLAY)**

- Center Panel - MDF Core With Birch Wood Veneer  
Stile and Rail - Solid Birch

### **DRAWER GLIDES**

- 3-Fold, Full Extension, Ball Bearing Glides;

### **SHELVES**

- 3/4" Particle Board Core with Melamine Paper, Full Depth, Adjustable;

### **DRAWER BOX**

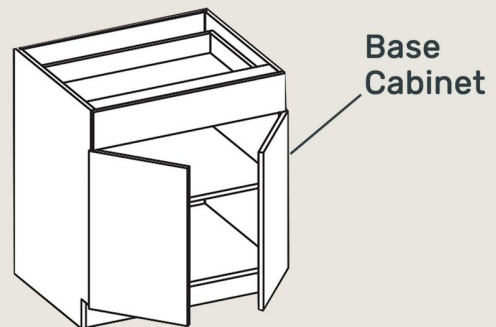
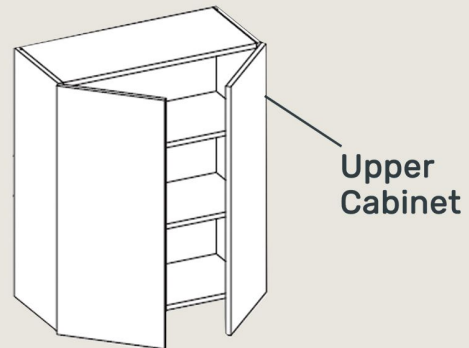
- Natural Color Plywood (5/8" Sides & Back; 1/4" Bottom);

### **INTERIOR FINISH**

- Color Matched to Door Fronts;

### **EXTERIOR FINISH**

- Color Matched to Door Fronts;



### **BACKING**

- 1/2" Particle Board Core with Melamine Paper;

### **TOE KICK**

- 1/2" Particle Board Core with Melamine Paper;

### **HINGES**

- 6-Way Adjustable, Soft Close



**ASPEN+OZARK**  
CABINETS